

CASE STUDY

SWEET TOMATOES

WAUKEGAN, ILLINOIS

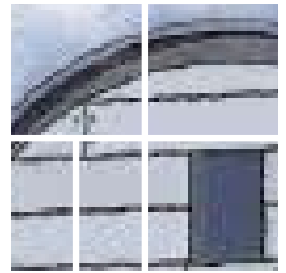
THE CONCEPT

The Sweet Tomatoes prototype design is a product of Garden Fresh Restaurant Corp. based out of San Diego, California. They approached us with a need for an Architect of Record, an architectural firm who provides local architectural services, to modify the original design and structure to best suit the local climate and code requirements. Sorce Architecture proudly has become a preferred Architect for Sweet Tomatoes restaurants.





SORCE ARCHITECTURE



CASE STUDY

SWEET TOMATOES

WAUKEGAN, ILLINOIS

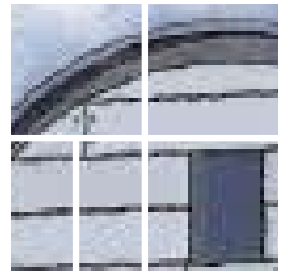
GRAND OPENING



ARCHITECTURE ■ INTERIOR DESIGN ■ CONSTRUCTION MANAGEMENT
121 SOUTH WILKE ROAD, SUITE 400 ARLINGTON HEIGHTS, ILLINOIS 60005
WWW.SORCEARCHITECTURE.COM PHONE 847.392.2600 FAX 847.394.4972



SORCE ARCHITECTURE



CASE STUDY

SWEET TOMATOES WAUKEGAN, ILLINOIS GRAND OPENING



Sorce Architecture worked closely with Garden Fresh Corp. to take the West-Coast concept and make it friendly to the Mid-West, climate considerations were made along with implementation of new ideas to their original prototype design.

